

TS-2,5 TANKSPRITZE

GERMAN WWII FIRE ENGINE

Kfz.343

Auf HENSCHEL 33FA1

1:35 SUPER-DETAILED CONVERSION KIT

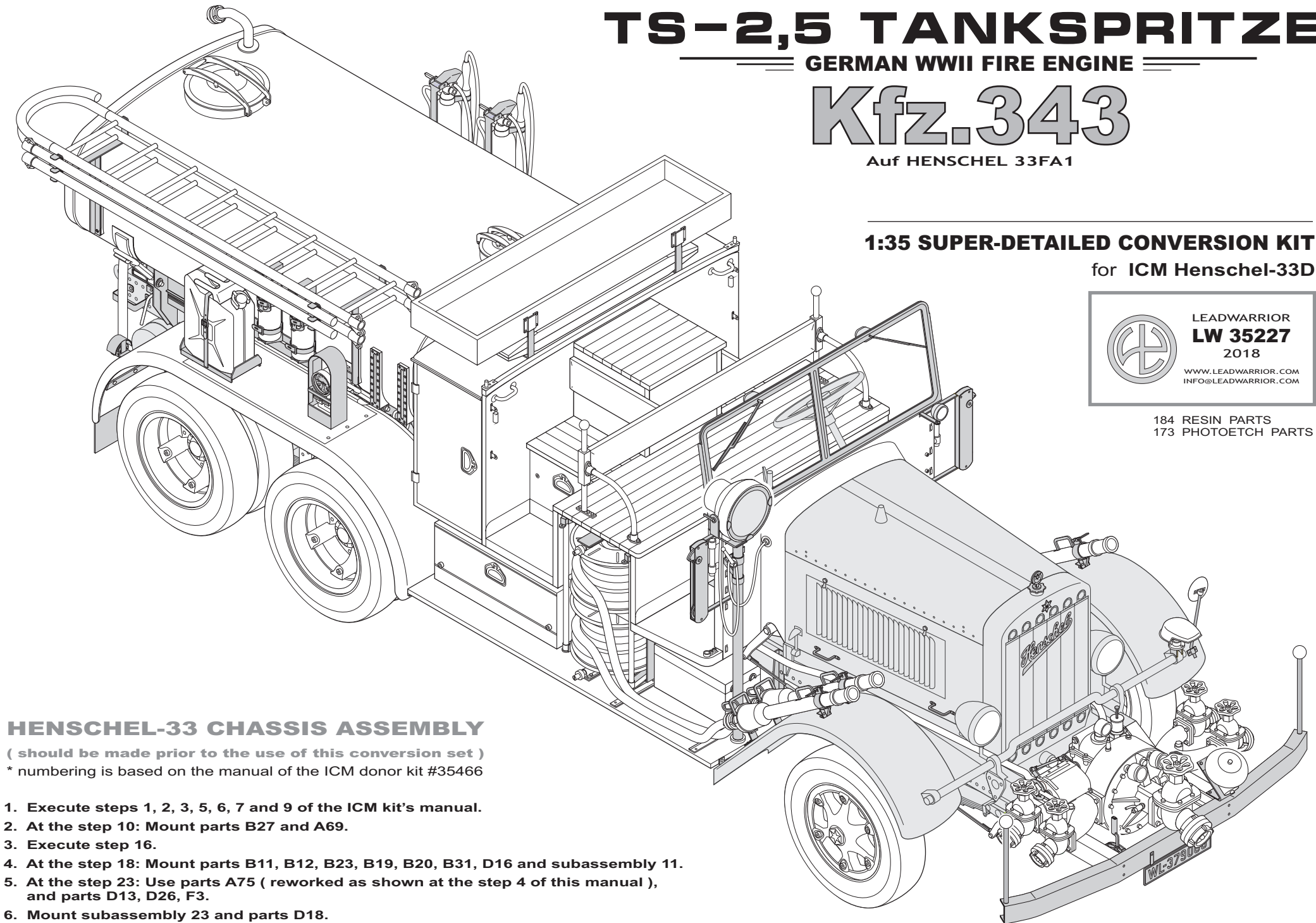
for ICM Henschel-33D



LEADWARRIOR
LW 35227
2018

WWW.LEADWARRIOR.COM
INFO@LEADWARRIOR.COM

184 RESIN PARTS
173 PHOTOETCH PARTS

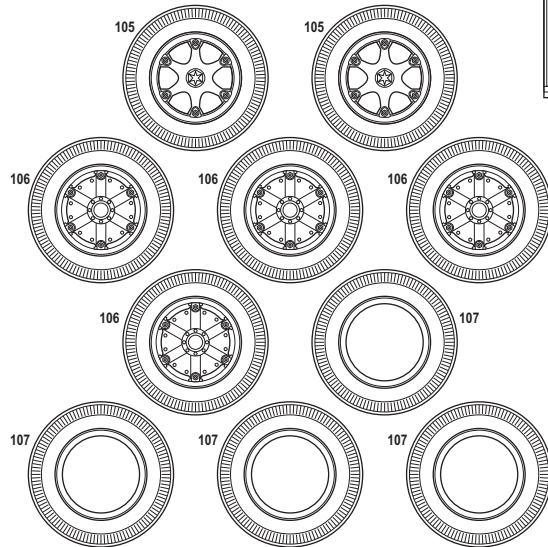
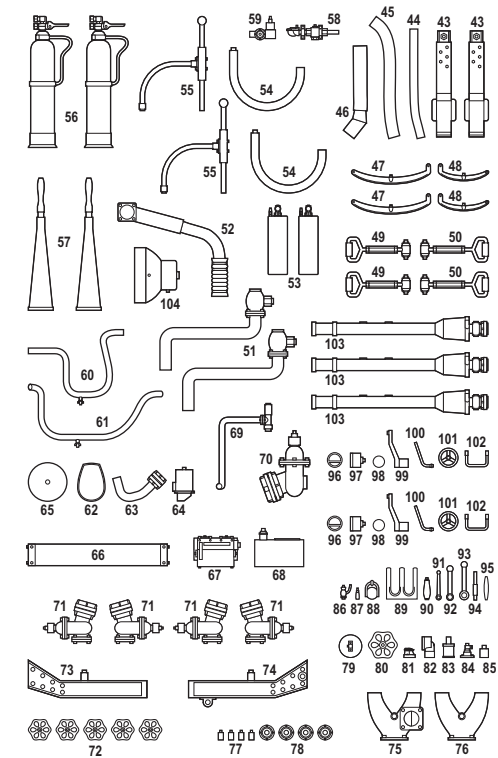
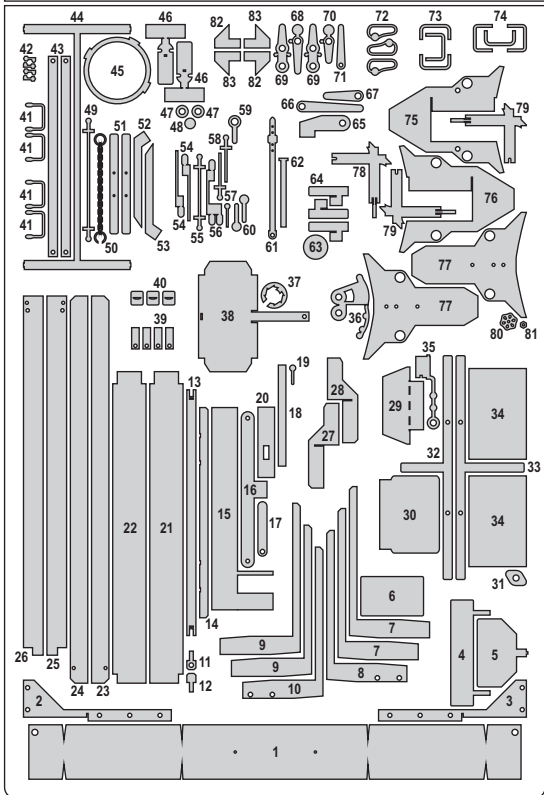
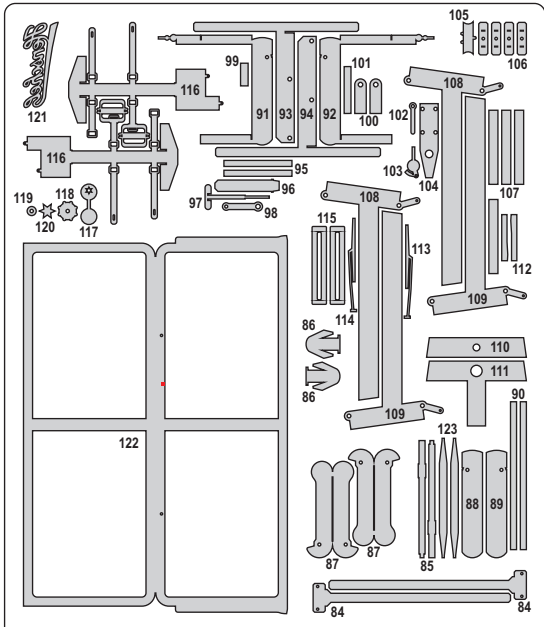


HENSCHEL-33 CHASSIS ASSEMBLY

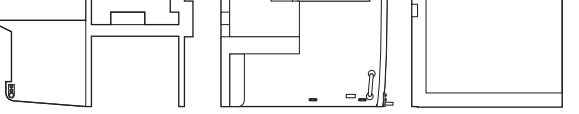
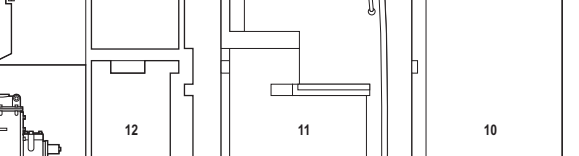
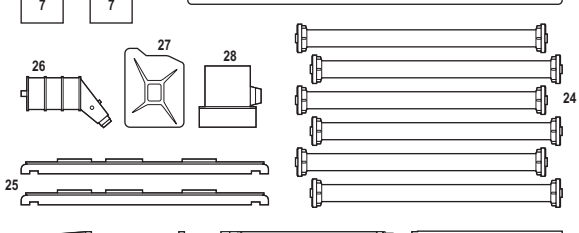
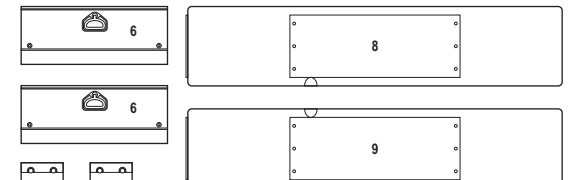
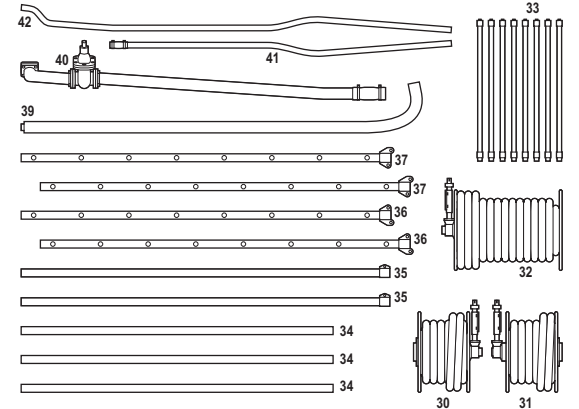
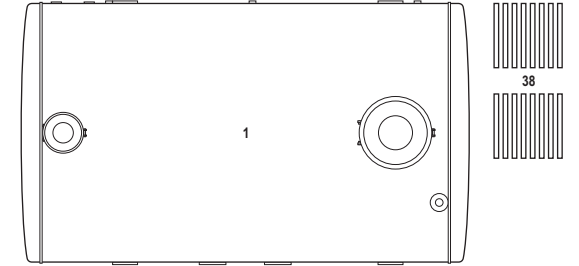
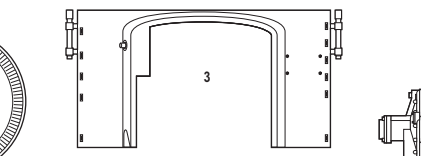
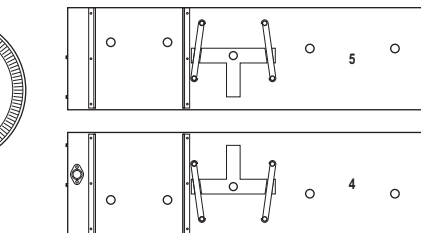
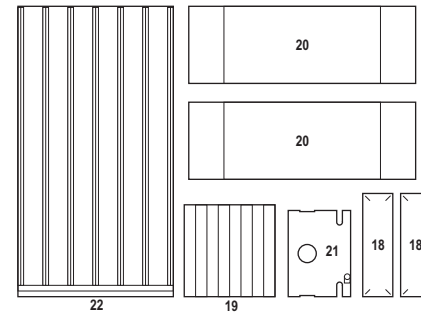
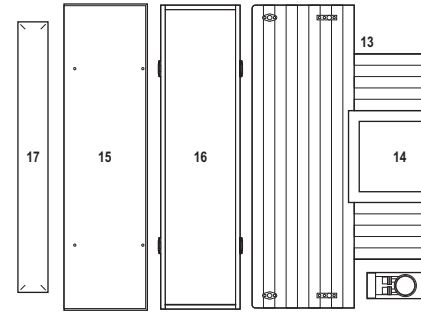
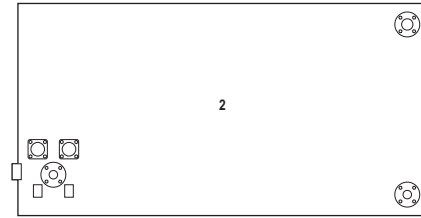
(should be made prior to the use of this conversion set)

* numbering is based on the manual of the ICM donor kit #35466

1. Execute steps 1, 2, 3, 5, 6, 7 and 9 of the ICM kit's manual.
2. At the step 10: Mount parts B27 and A69.
3. Execute step 16.
4. At the step 18: Mount parts B11, B12, B23, B19, B20, B31, D16 and subassembly 11.
5. At the step 23: Use parts A75 (reworked as shown at the step 4 of this manual), and parts D13, D26, F3.
6. Mount subassembly 23 and parts D18.

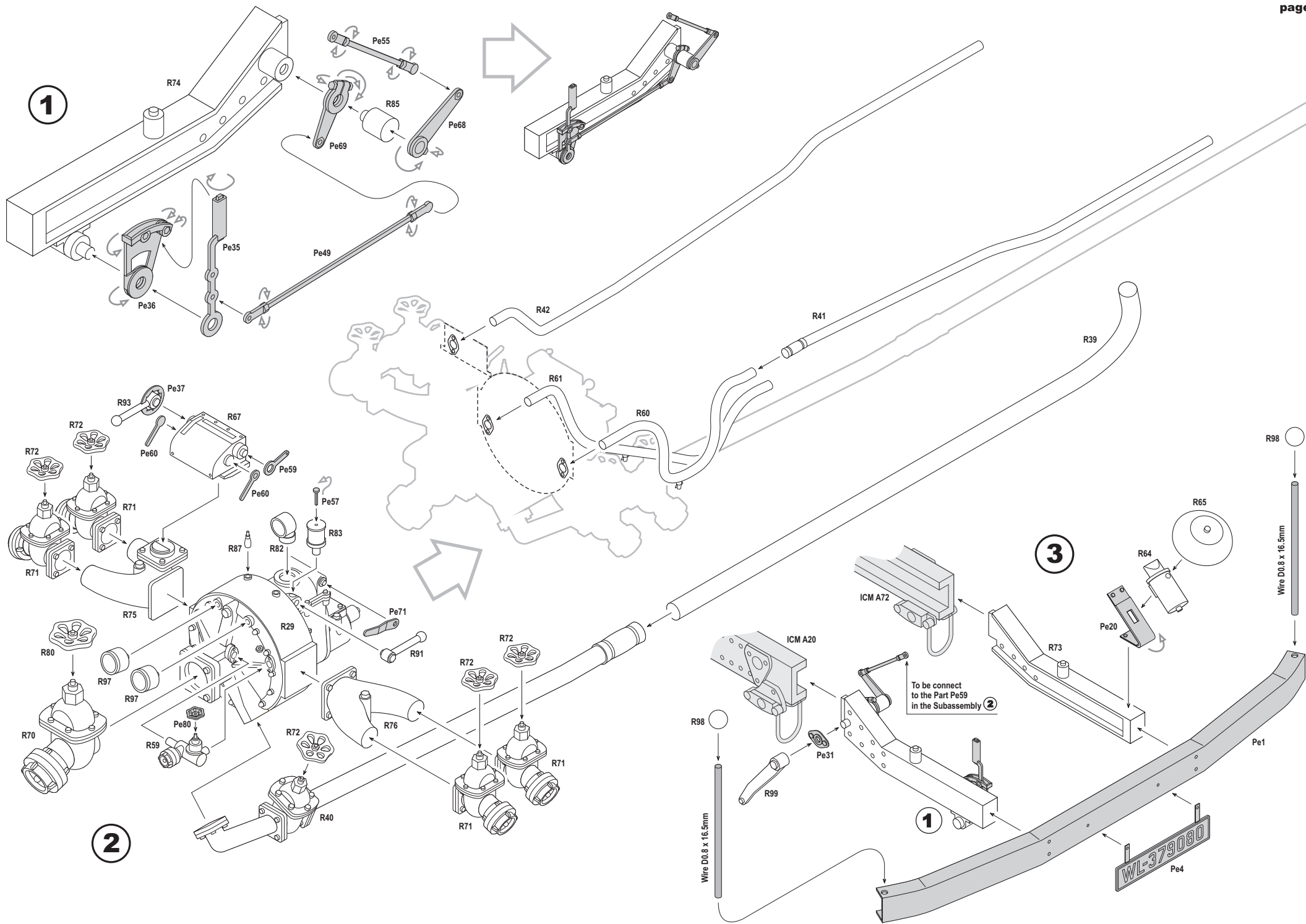


- Metal rod 1,3mm
- Wire 0,8mm
- Wire 0,65mm
- Wire 0,5mm

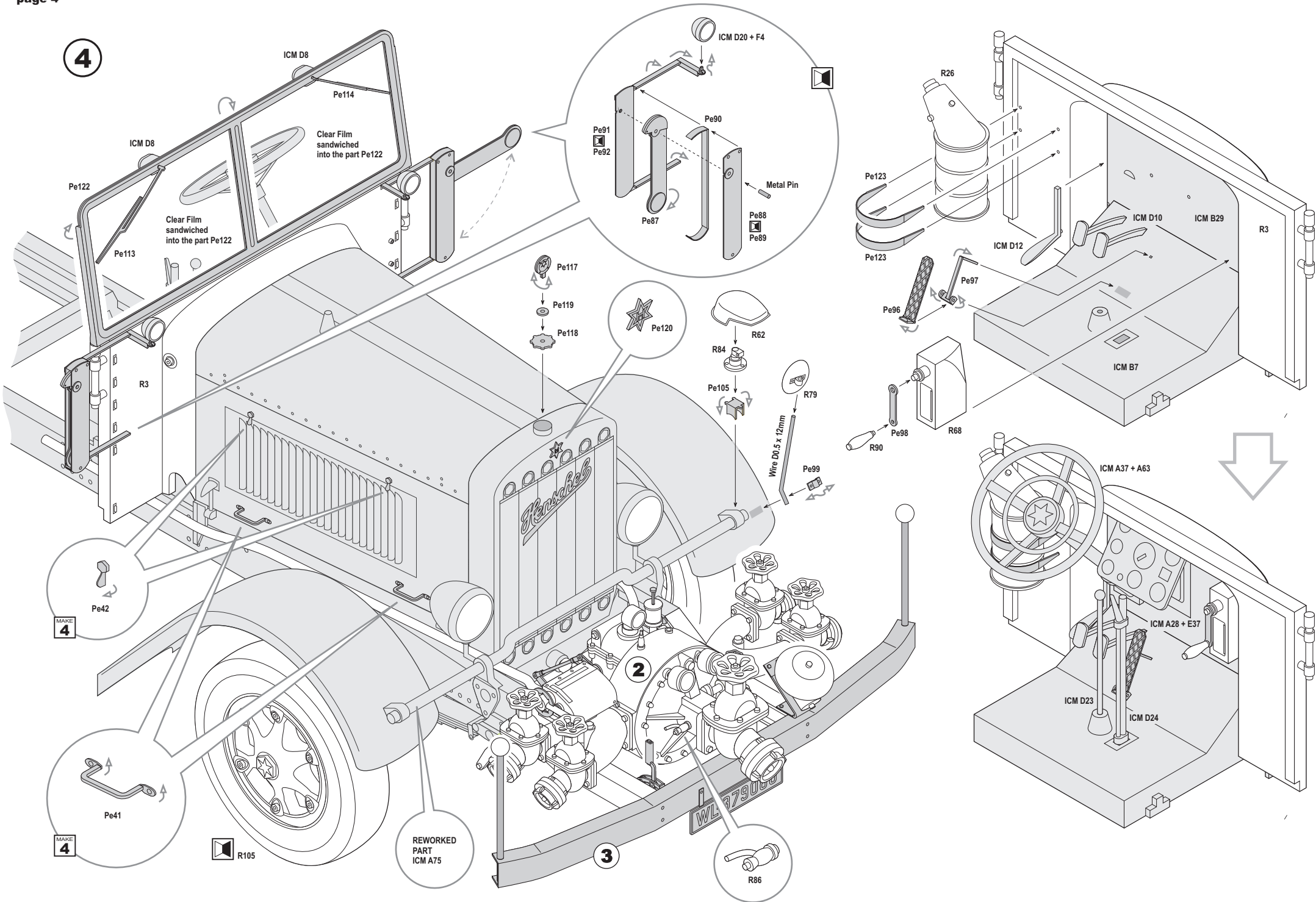


Clear Film

Kfz-343 LEADWARRIOR



4



2

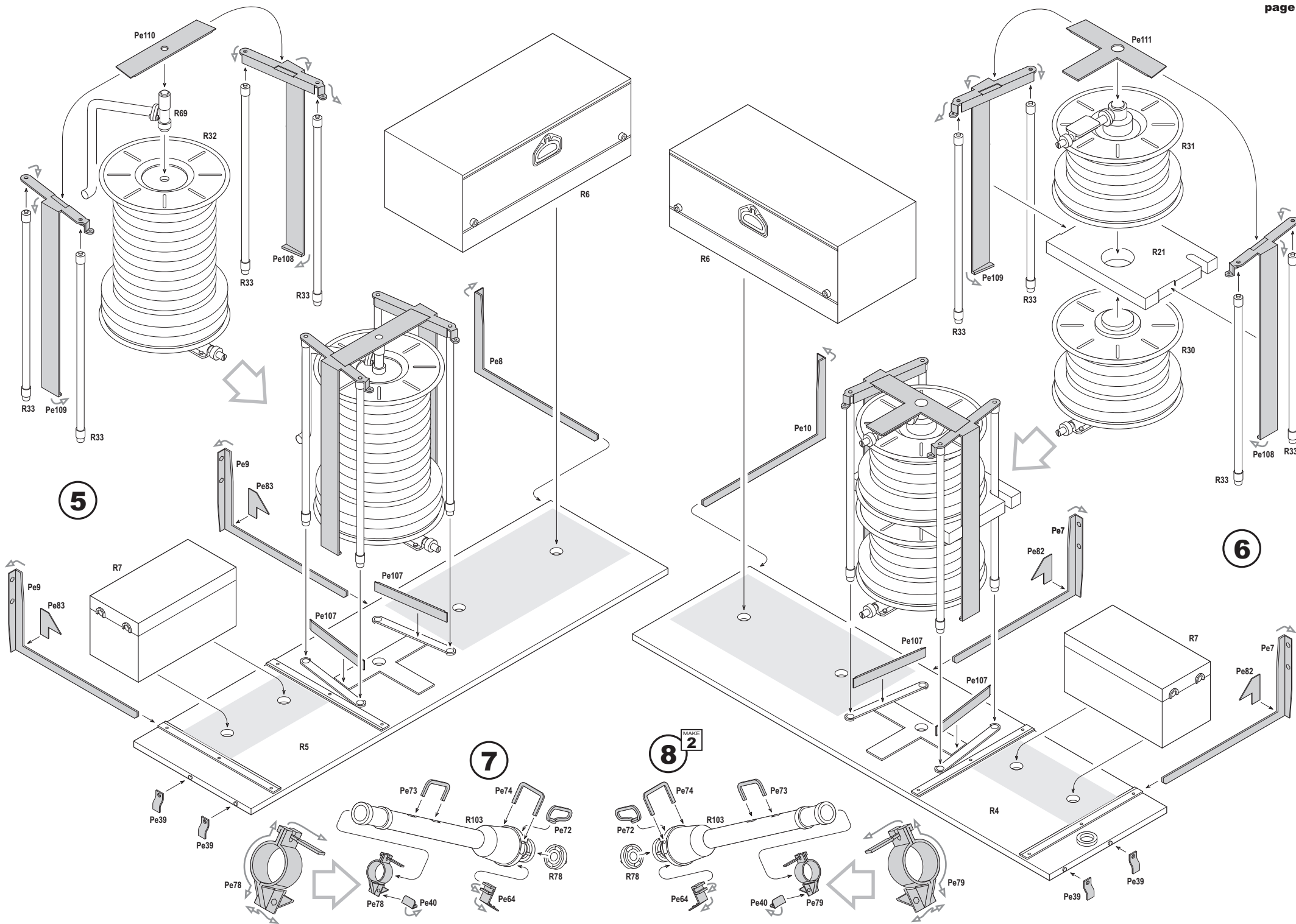
3

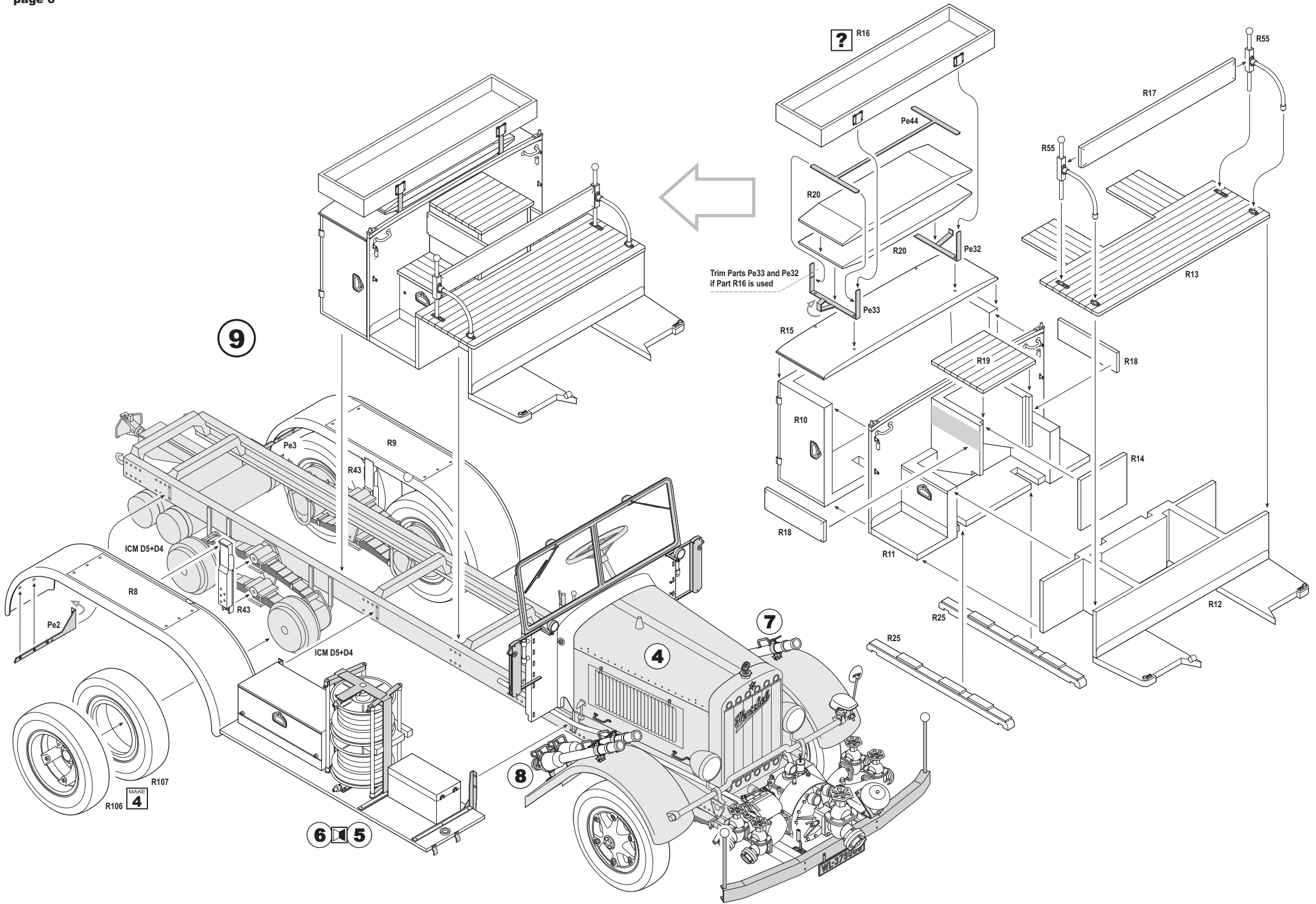
MAKE 4

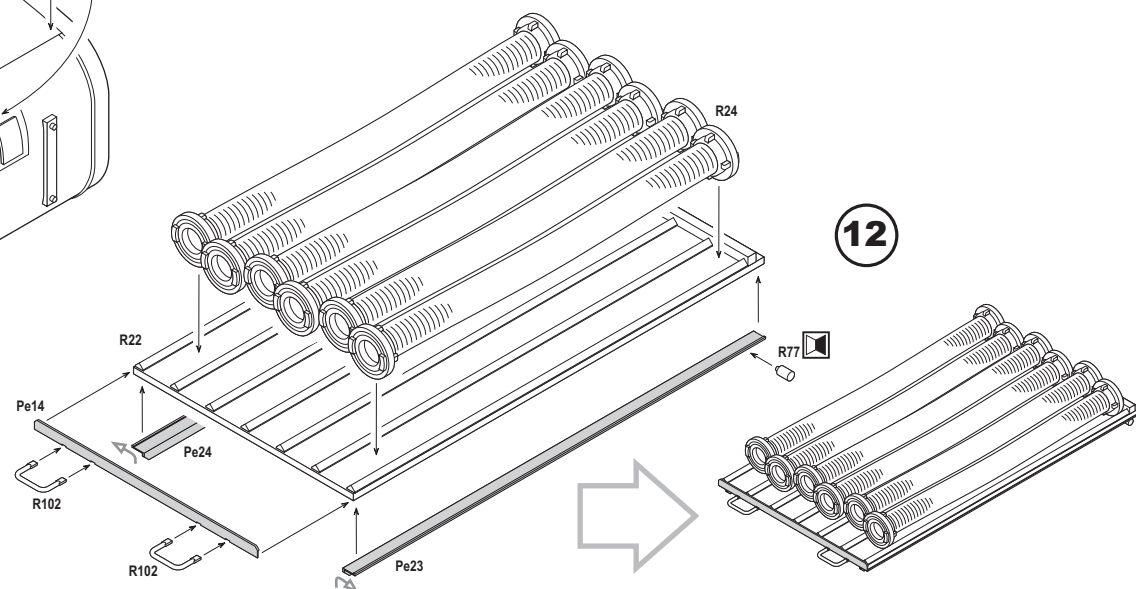
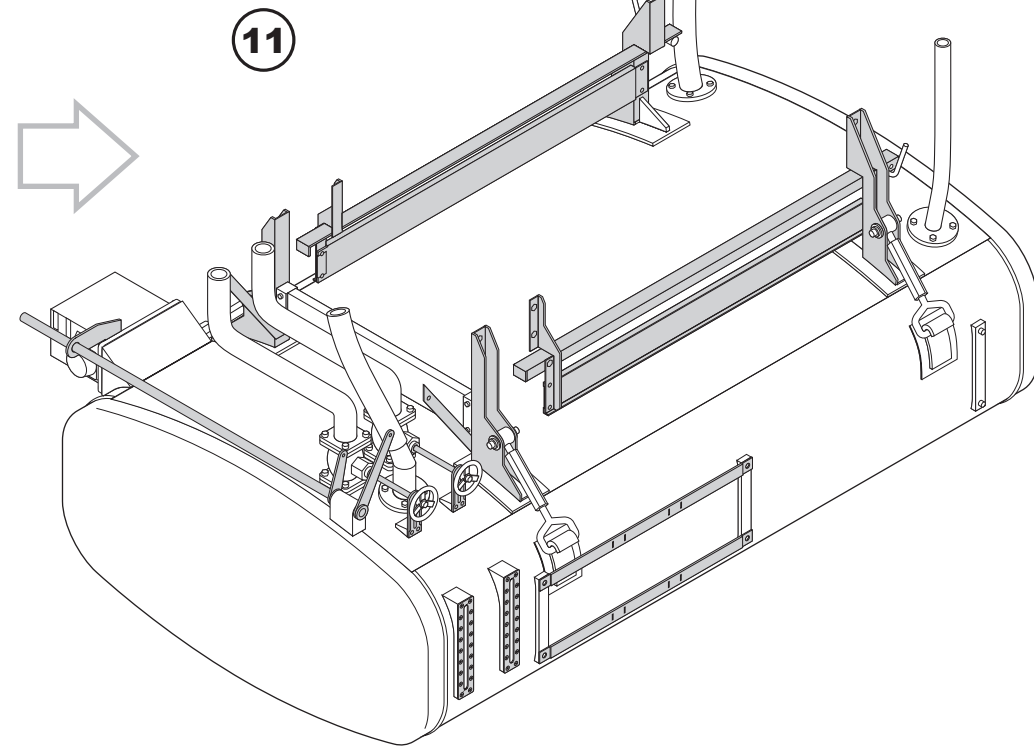
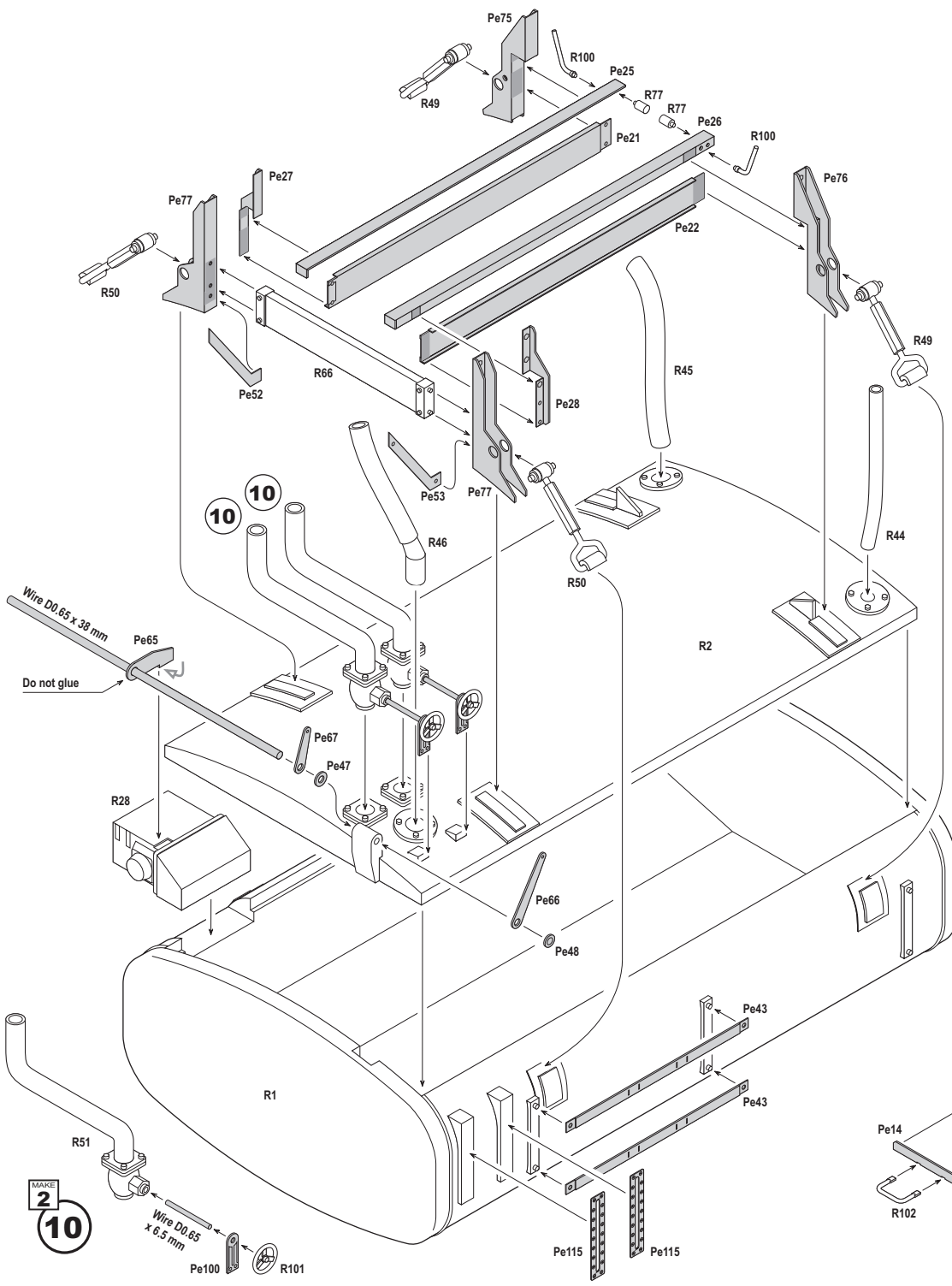
MAKE 4

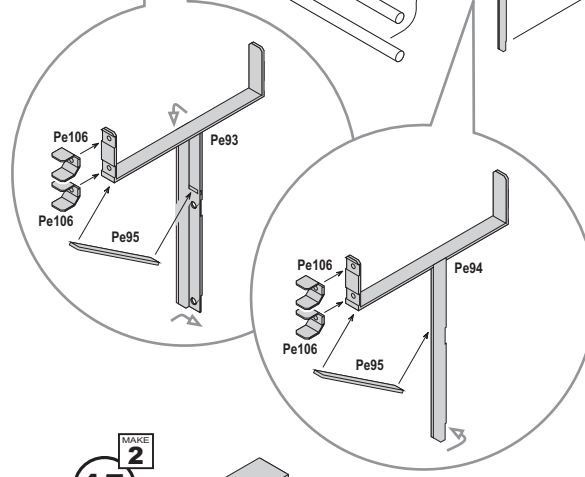
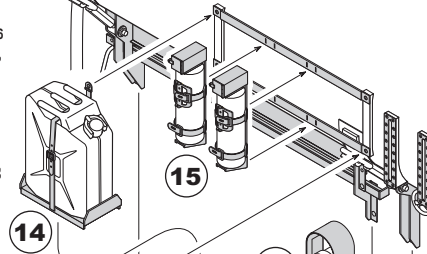
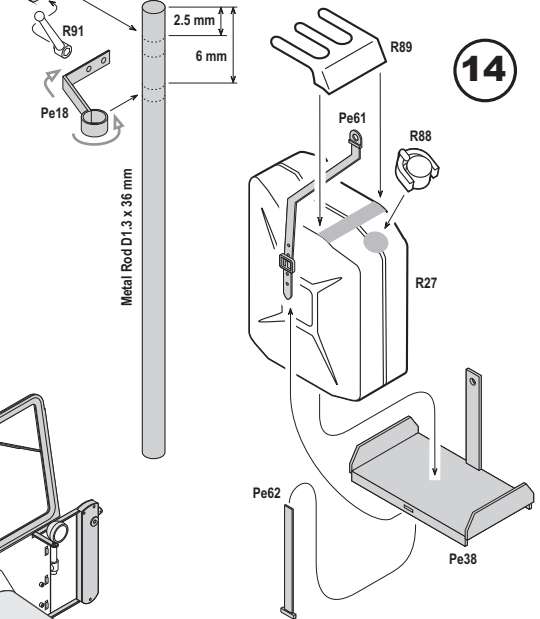
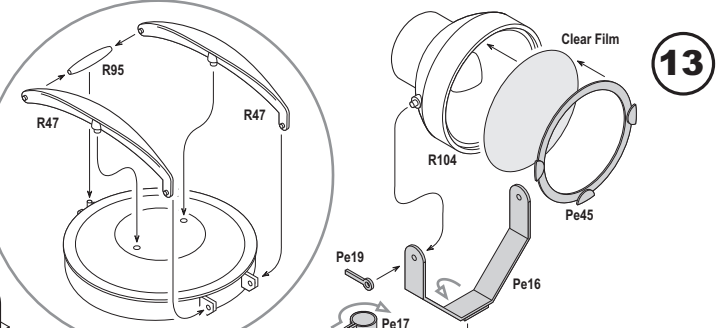
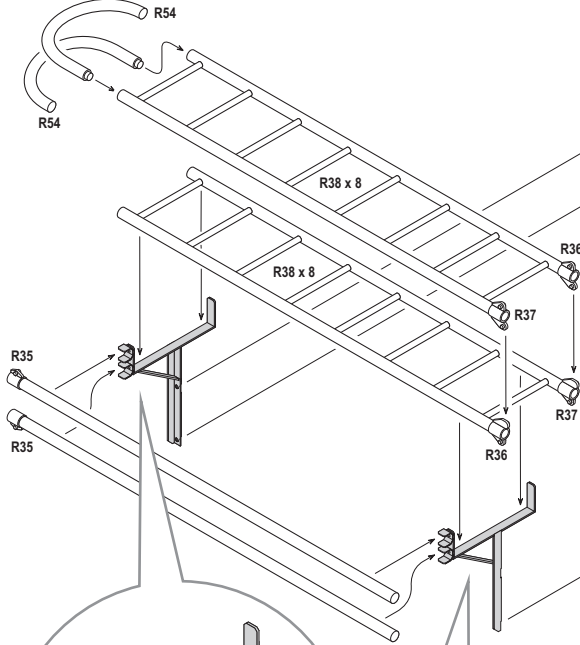
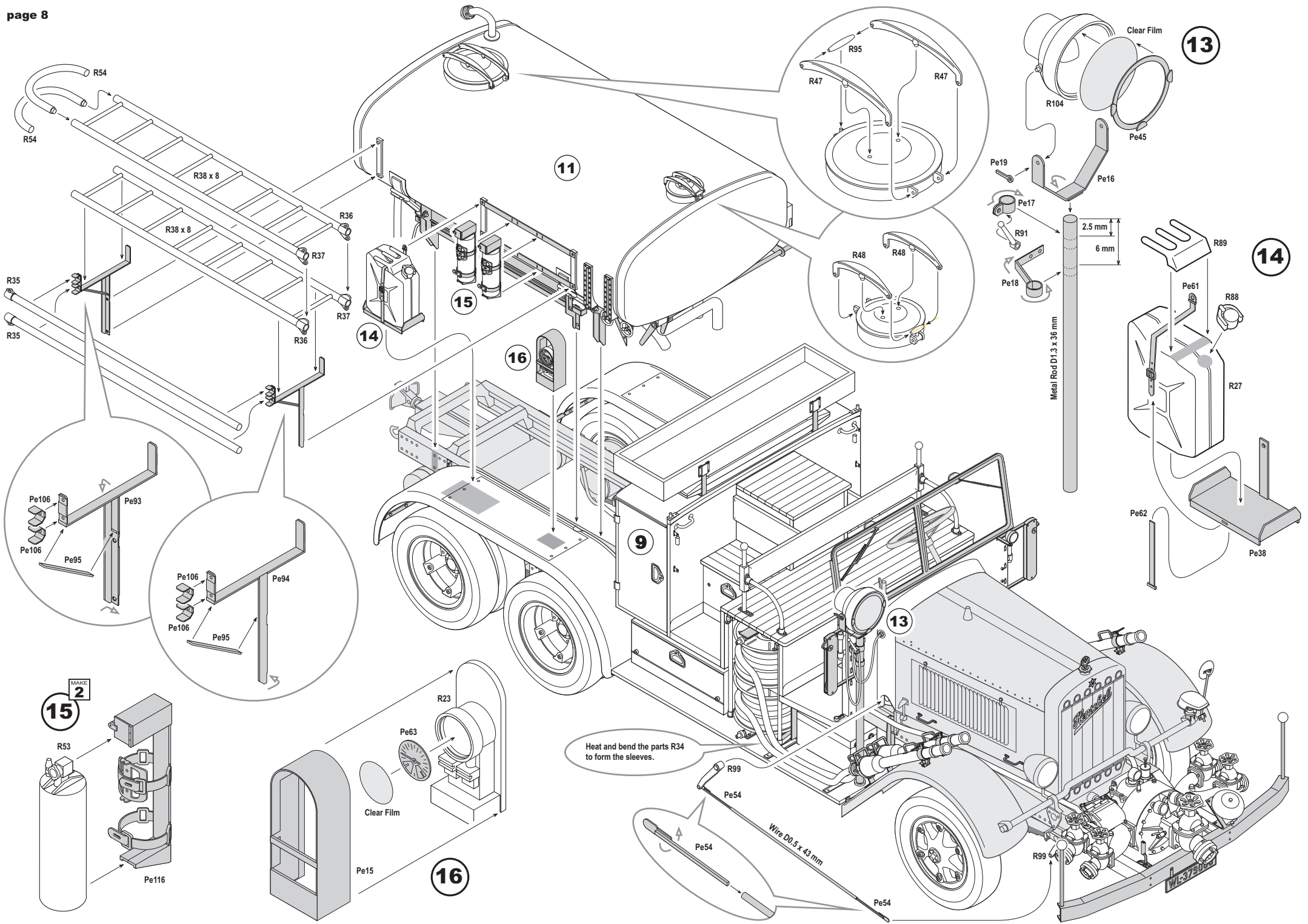
REWORKED PART ICM A75











Heat and bend the parts R34 to form the sleeves.

